

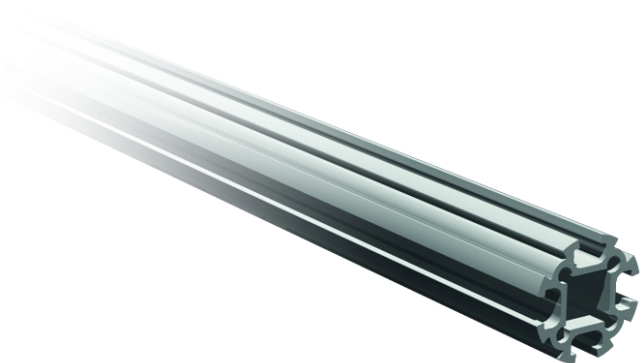
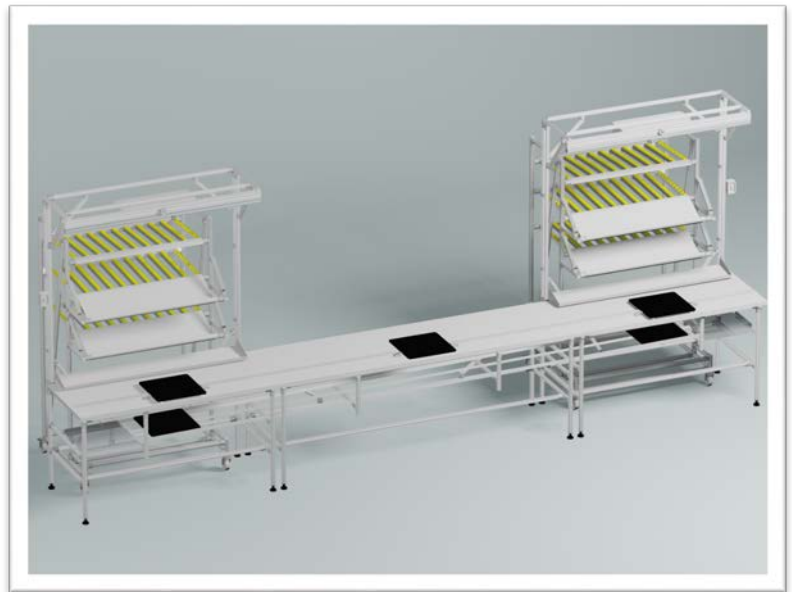


Easysae

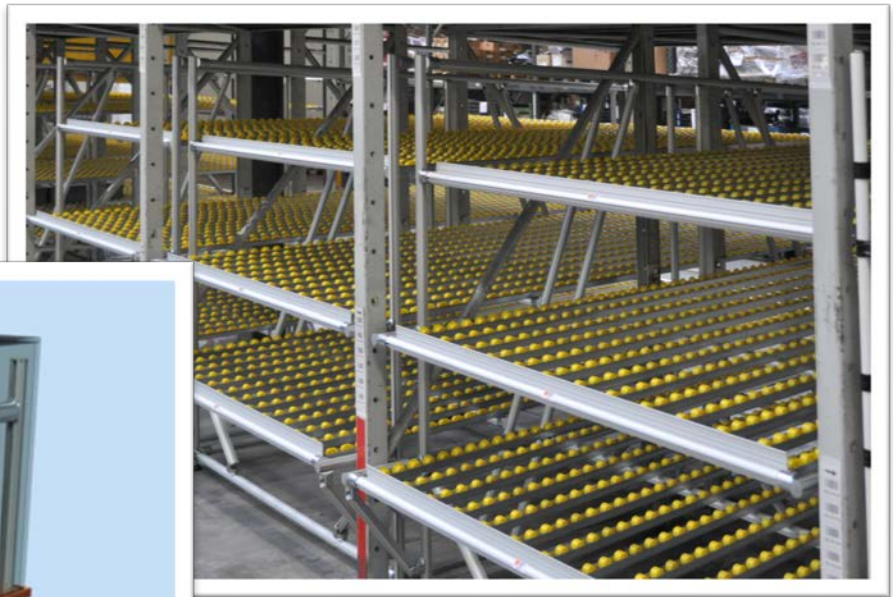
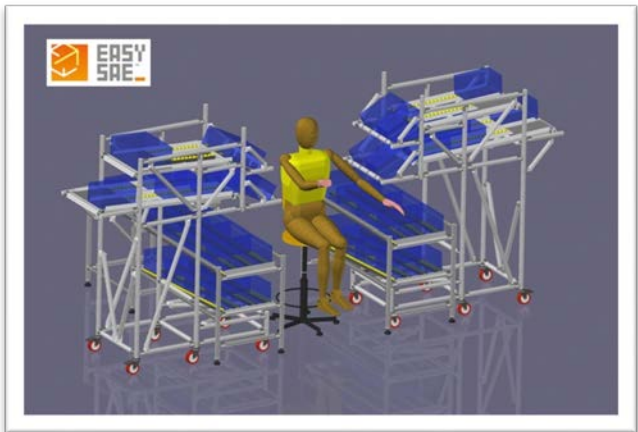
The aluminum system that works!



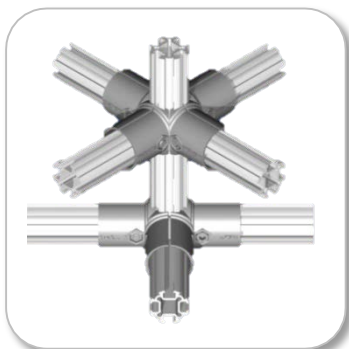
Make it happen with



your imagination!



1.1 Components for building structures



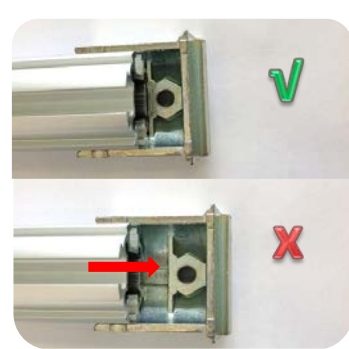
EPR1 Tubular aluminum profile L = 4000 mm

Extruded aluminum EN AW 6060-T5 anodized

Diameter 35 mm

Weight 0,83 kg / m

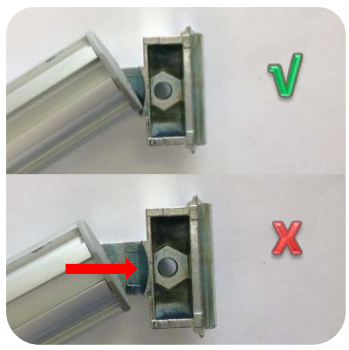
Package: 5 pcs



EKG1 Connection kit 90°

Zinc alloy die-cast coupling halves , sandblasted and galvanized including screw & nut.

Package: 50 pcs



EKG2 Connection kit 0° - 180°

Zinc alloy die-cast coupling halves , sandblasted and galvanized including screw & nut.

Package: 50 pcs



EKG3 Connection kit soft 90° coupling

Zinc alloy die-cast coupling halves , sandblasted and galvanized including screw & nut.

Package: 10 pcs



EKP1 Adjustable feet

Feet Ø 50 mm with non-slip rubber plug complete picture expansion nylon , square nut , hex nut and washer . Adjustable : 0-20 mm . Max. 100 kg load.

Package: 10 pcs



WHEEL

Excellent for trucks and machine shops with medium loads , even in case of continuous movement . Ideal for indoor use and suitable for frequent washing and sterilization.

Load Capability Max 150 kg/wheel for max 4 km/h.

Other load Capabilities on request.

EKR5 Ø 100 mm Wheel kit with pin 150 kg

Castor complete with expansion nylon plug , square nut , bolt and washer. For use up to 150kg at 4 km/h.

Package: 1 pcs



EDC816 Expansion plug included



EKR6 Ø 100 mm Wheel kit with pin and brake 150 kg

Castor complete with expansion nylon plug , square nut , bolt and washer. For use up to 150kg at 4 km/h.

Package: 1 pcs



Correct torque



1.1 Components for making structures



EKR7 Ø 100 mm **Wheel kit with plate 150 kg**

Pivoting wheel complete with 4 screws, 4 nuts ETFX1 and 4 washers. For use up to 150kg at 4 km/h.

Package: 1 pcs



EKR8 Ø 100 mm **Wheel kit with plate and brake 150 kg**

Pivoting wheel complete with 4 screws, 4 nuts ETFX1 and 4 washers. For use up to 150kg at 4 km/h.

Package: 1 pcs



EKR9 Ø 100 mm **Wheel kit fixed 150 kg**

Fixed wheel complete with 4 screws, 4 nuts ETFX1 and 4 washers. For use up to 150kg at 4 km/h.

Package: 1 pcs



EKR8 Ø 100 mm **Wheel kit with plate and brake 150 kg**

Pivoting wheel complete with 4 screws, 4 nuts ETFX1 and 4 washers. For use up to 150kg at 4 km/h.

Package: 1 pcs



EKR9 Ø 100 mm **Wheel kit fixed 150 kg**

Fixed wheel complete with 4 screws, 4 nuts ETFX1 and 4 washers. For use up to 150kg at 4 km/h.

Package: 1 pcs

3000100L Ø 100 mm Wheel kit with plate 300 kg

Pivoting nylon wheel complete with 4 screws, 4 nuts

ETFX1 and 4 washers.

For heavy duty use up to 300 kg a 4 km/h.

Package: 1 pcs



3000100B Ø 100 mm Wheel kit with plate and brake 300 kg

Pivoting nylon wheel with brake complete with 4 screws, 4

nuts ETFX1 and 4 washers.

For heavy duty use up to 300 kg a 4 km/h.

Package: 1 pcs



3000100F Ø 100 mm Wheel kit fixed 300 kg

Fixed nylon wheel complete with 4 screws, 4 nuts ETFX1

and 4 washers.

For heavy duty use up to 300 kg a 4 km/h.

Package: 1 pcs



3470UAR200P63 Ø 200mm Wheel kit with plate 300 kg

Pivoting nylon wheel complete with 4 screws, 4 nuts ETFX1 and 4

washers.

For heavy duty use up to 300 kg a 4 km/h and 700kg static load.

Package: 1 pcs



3477UAR200P63 Ø 200mm Wheel kit with plate and brake 300 kg

Pivoting nylon wheel complete with 4 screws, 4 nuts ETFX1 and 4

washers.

For heavy duty use up to 300 kg a 4 km/h and 700kg static load.

Package: 1 pcs



1.1 Components for making structures



ECP1 End plug for tube EPR1

Grey plastic plug for closing the ends of the EPR1 tube.

Package: 50 pcs



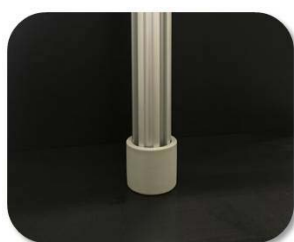
ECP2 Rubber end plug for tube EPR1

To be used as end or end plug.

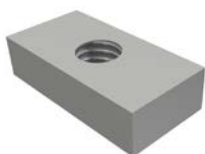
Includes 1 rubber end plug and 1 washer.



Package: 1 pcs



ETFX1 M6 nut



WDC0030 M6 nut

ETFX1 or WDC0030 M6 nut

Place this M6 nut in one of the slots of the EPR1 tubing and you can fasten almost anything to the tube.

ETFX1 nut can be installed anywhere on the tube by just tilting the nut into the tubing grooves.

The WDC 0030 nut can only be installed from the ends of the tubings. Suitable for heavy loads.

Package: 50 pcs

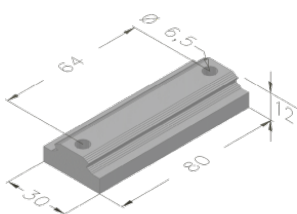


E837 Angle

Angle iron, 35 x 35 mm for multipurpose use.

Holes have dimensions for M6.

Package: 1 pcs



Use this to join the
EPR1 tubing to any
flat surface

EDC841 Connecting plate universal

Connecting plate universal aluminum 30x80 mm.

Merges the tubular profile EPR1 to any flat tubing or surface.

Package: 1 pcs



EDC790 Bracket for workbenches etc

Use this bracket to mount any type of table top or similar.

Package: 1 pcs



Workbenches



Lean
Production





EKS R1 Kit Low profile support bar for roller track

Bar of anodized aluminum profile L = 4000 mm for snap mounting on tubular profile EPR1 including 8 nylon finger strips L = 500 mm with long teeth.

Package: 1 pcs



EKS R2 Kit Profile support bar for roller track with stop

Bar of anodized aluminum profile L = 4000 mm for snap mounting on tubular profile EPR1 including 8 nylon finger strips L = 500 mm with short teeth.

Package: 1 pcs



EPC 818 Low profile support bar for roller track

Bar anodized aluminum profile L = 4000 mm for snap mounting on tubular profile EPR1 without nylon finger strips.

Package: 1 pcs



EPC 820 Profile support bar for roller track with stop

Bar anodized aluminum profile L = 4000 mm for snap mounting on tubular profile EPR1 without nylon finger strips.

Package: 1 pcs

C40300 Plastic strips long teeth

Finger strips with long teeth. Use this for the upper end of your flowrack.

L = 500 mm

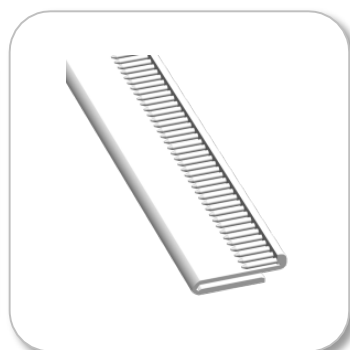
Package: 10 pcs



C40301 Plastic strips long teeth

Finger strips with short teeth. Use this for the lower end of your flowrack.

Package: 10 pcs

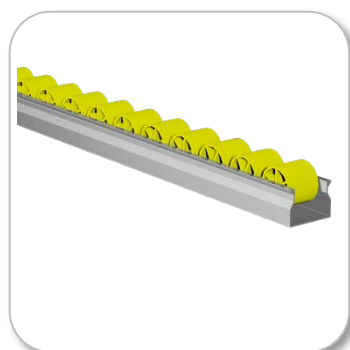
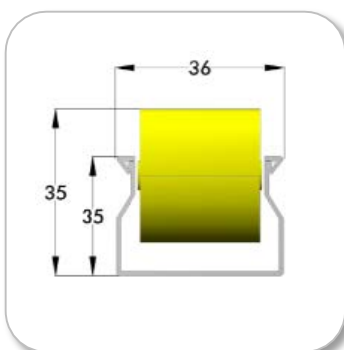


C514 Rollertrack Heavy duty

Length 4000 mm – Roller pitch=33 mm

Load see page 25

Package: 1 pcs

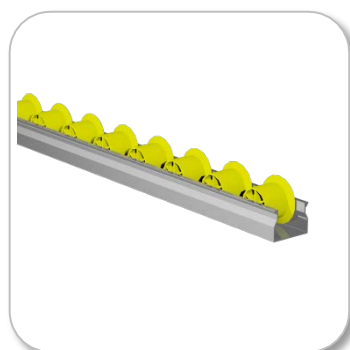
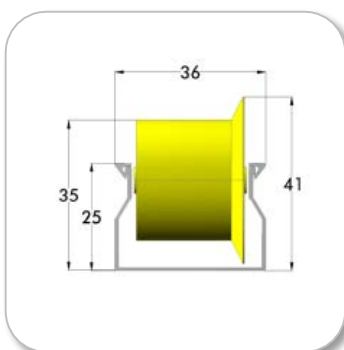


C515 Rollertrack Heavy duty with guide flanges

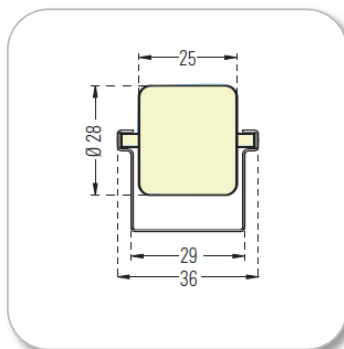
Length 4000 mm – Roller pitch=50 mm

Load see page 25

Package: 1 pcs



1.2 Components for making flowracks

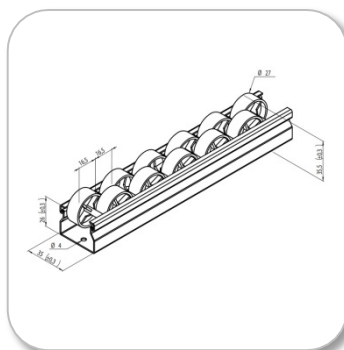


3664100 Rollertrack Standard

Length 4100 mm – Roller pitch=33 mm

Load see page 26

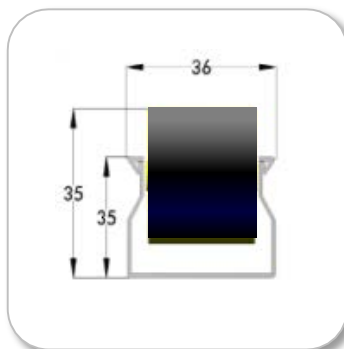
Package: 1 pcs



C951 Rollertrack with overlapping rollers

Length 4000 mm – Roller pitch: 16,5 mm

Package: 1 pcs

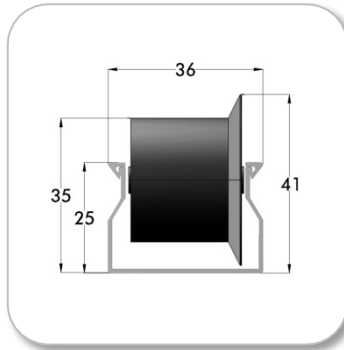


C160 Roller track for ESD applications

Length 4000 mm – Roller pitch: 33 mm

Resistance coefficient : 28,8 $\frac{N}{dm^2}$

Package: 1 pcs



C603 Roller track with flanges for ESD applications

Length 4000 mm – Roller pitch: 50 mm

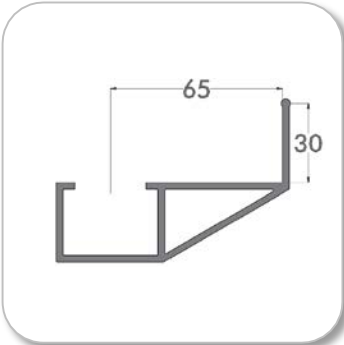
Resistance coefficient : 28,8 $\frac{N}{dm^2}$

Package: 1 pcs

E516 Plastic guide Large for roller track

Length 4000 mm, in PVC

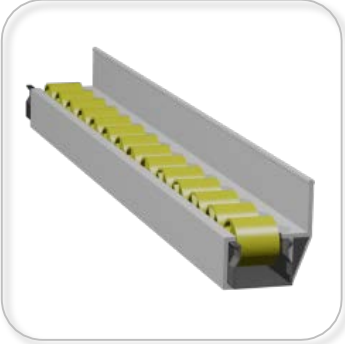
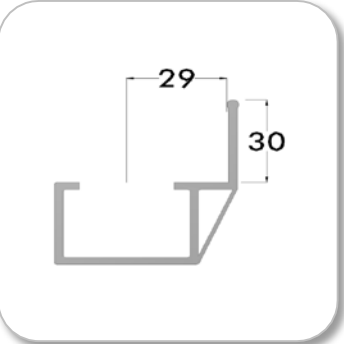
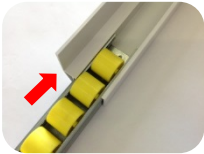
Package: 1 pcs



E596 Plastic guide Small for roller track

Length 4000 mm, in PVC

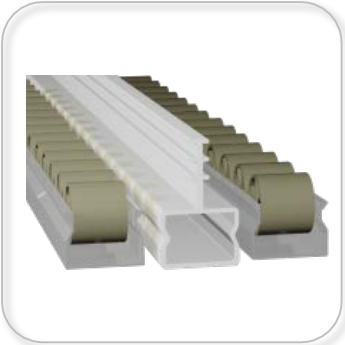
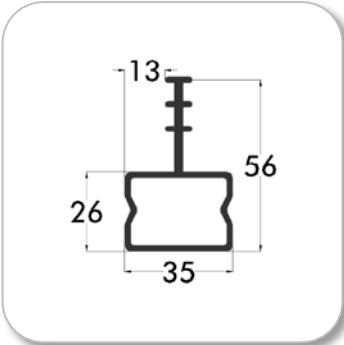
Package: 1 pcs



E538 Plastic guide central

Length 4000 mm, in PVC

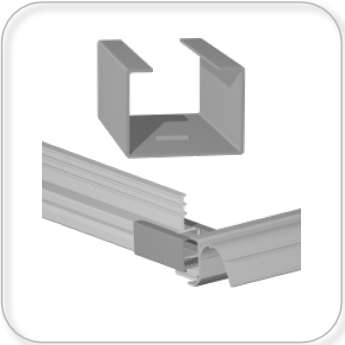
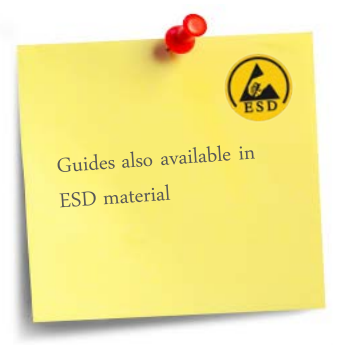
Package: 1 pcs



E542 Guide support

Steel bracket for fixing the E538 guide

Package: 1 pcs



1.2 Components for making flowracks

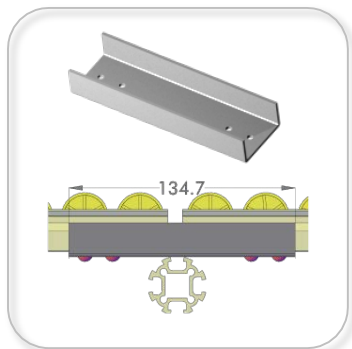


E867 Roller track steel clip

Fits to the aluminum profiles EKS1 ed EKS2.

Suitable for ESD applications

Package: 10 pcs



E868 Bracket for join rollertracks

This bracket can be riveted or screwed to the rollertracks.

Package: 1 pcs



C527 Brake clip

To slow down the speed of the material rolling down along the tracks.

Package: 1 pcs



E869 Backstop

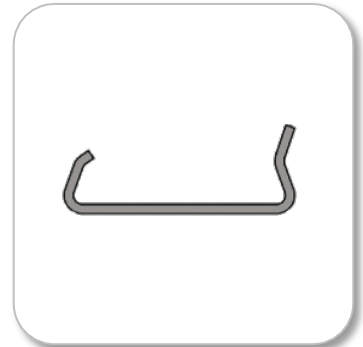
Prevents the load for rolling backwards.

Package: 5 pcs

E870 Reinforcement clip

Use this clip where boxes are loaded onto the tracks. The clip prevent the track from flexing from the impact.

Package: 10 pcs



E836 Rollertrack locking clip

Use to fix the rollertrack onto the aluminum bars

Package: 10 pcs



Bracket for ergonomic presentation boxes and containers

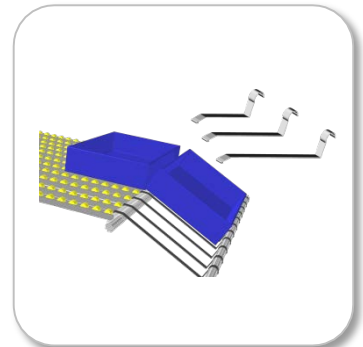
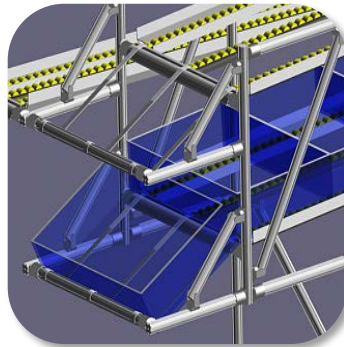
EDC833 L = 400 mm

EDC834 L = 300 mm

EDC835 L = 200 mm

Galvanized sheet. Width 20 mm, thickness 2 mm.

Package: 2 pcs





E871 **Grey Sealing rubber strip**

EPDM rubber. It is easily fixed interlocking, closing quarries profile EPR1.

The joints can also be installed to seal inserted.

Supplied in rolls of 50 meters.

Special colors on request. Minimum 1500 mt

Package: 1 pcs



E915 **Grey PVC M cover strip**

Made in soft PVC 70 SH.

It is fixed to the aluminum tube easily by pressure, closing the hollow profile EPR1. Recommended for protection of delicate parts. The joints can also be installed to seal inserted. Supplied in rolls of 50 meters.

Special colors on request. Minimum 1000 mt

Package: 1 pcs



E916 **Yellow PVC L cover strip**

Made of PVC 70 SH. Recommended for impact protection.

Supplied in rolls of 50 meters.

Special colors on request. Minimum 500 mt

Package: 1 pcs



Colored plastic profiles

E946 **Green, L=2000 mm**

E947 **Yellow, L=2000 mm**

E948 **Red, L=2000 mm**

E949 **Grey, L=2000 mm**

E950 **Transparent, L=2000 mm**

Made of rigid PVC. Can easy be mounted to profiles EPR1 and EPC945.

Special colors on request. Minimum 1000 mt

Package: 10 pcs/color

EPC945 Profile “traffic light”

Aluminum profile L = 4000 mm for the realization of systems at traffic lights or to protect the passage of electric cables or air hoses

Package: 1 pcs

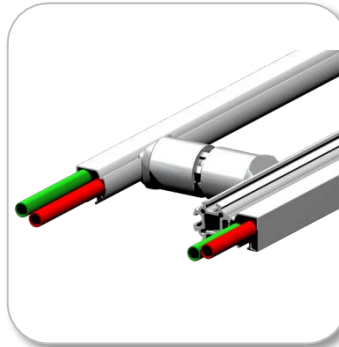
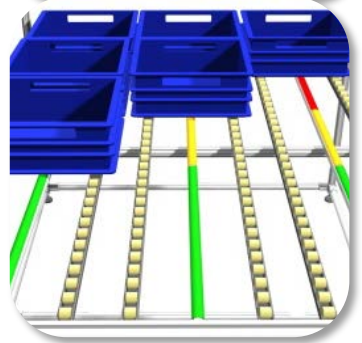
The traffic light system are used for production according to the Kanban principle, but not only

The use of colored profiles - in red, yellow and green - in combination with the profile of traffic lights are a useful tool to realize the gravity of the warehouses that take into account the Kanban principle. The use of color makes it possible to report in time the need for supply of materials and avoid unnecessary accumulation of stocks. The profile semaphore can also be employed to protect the passage of electrical cables and air pipes and be fixed quickly to workstations.

But not only!

The profiles in colored plastic can be applied under pressure on the tubular profile EPR1, covering the pits and avoiding the accumulation of dust. In combination with the tubular profile may serve to identify, such as storage of different materials, or of materials pending completion or non-compliant.

The version of the profile in transparent plastic may be particularly useful for inserting, such as labels.





E910 Protection tube Black

Polyethylene sp. 6 mm, hole Ø 35 mm, L = 2000 mm with an outer protective plastic surface. Scratch-resistant and washable. Excellent resistance to deformation, CFC-free. It does not release toxic fumes.

Package: 1 pcs



E911 Protection tube silver

Polyethylene sp. 6 mm, hole Ø 35 mm, L = 2000 mm with an outer protective plastic surface. Scratch-resistant and washable. Excellent resistance to deformation, CFC-free. It does not release toxic fumes.

Package: 1 pcs



W523 Towbar

It is featuring a robust spring that keeps the rudder vertically when not engaged in the hook.

Package: 1 pcs



W942 Free standing foot

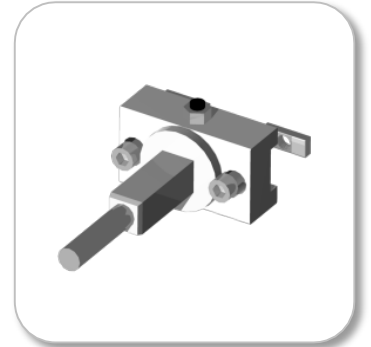
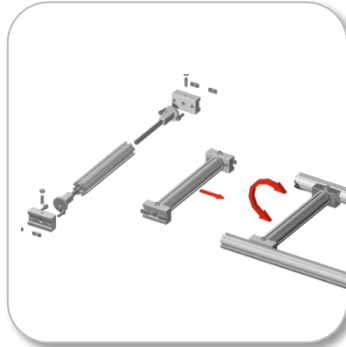
Freestanding foot truck with wheels Ø 100 mm.

Package: 1 pcs

EKSR5 Kit for Free rotation profiles

With this kit it is possible to fix a profile to a structure leaving it free to rotate. You can use this for many applications, such as warehouses gravity with exchange containers.

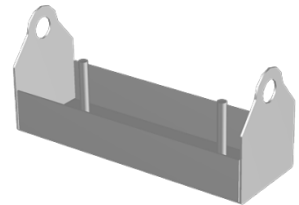
Package: 1 pcs



EDC883 Box with counterweights

Galvanized box. This is usefull when you need a counterwight when designing dynamic exchange. You fill the box with weights EDC884.

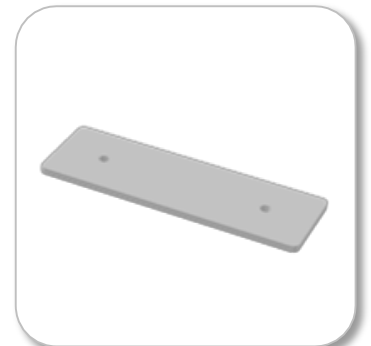
Package: 1 pcs



EDC884 Counterweights

Galvanized steel. Each plate weight: 3,5 kg. Fits into the box EDC883.

Package: 1 pcs

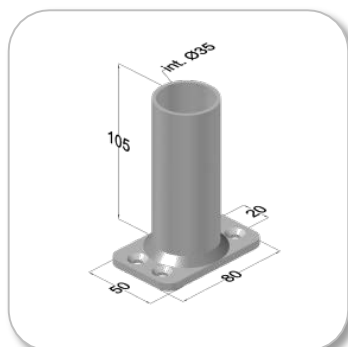


EDC842 Floor fixing bracket

Galvanized steel bracket for fixing the Easysae tube to the floor.

Package: 1 pcs



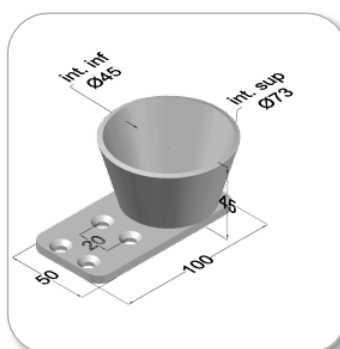


EDC934 Support for EPR1 profile

Galvanized steel support (plate size 50x80 mm, height 105 mm) for fixing profile tubular EPR1 on to the WPC profile 60 x 50 mm.

Or for fixing on other surfaces.

Package: 1 pcs



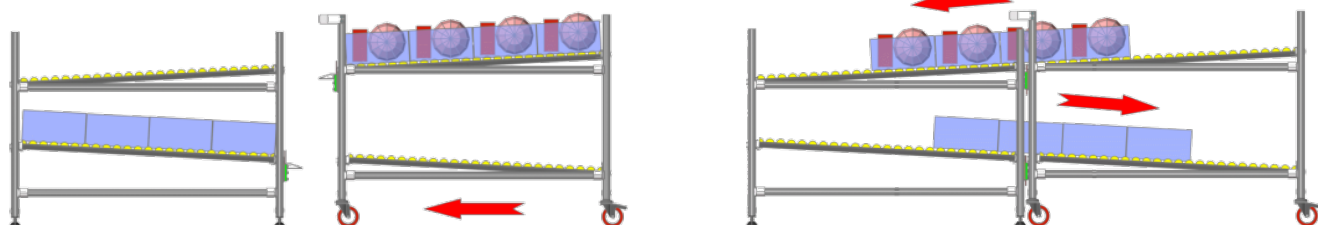
EDC935 Stacker support EPR1

Stacker support in galvanized steel (plate size 50x100 mm, height 45 mm).

Package: 1 pcs

Easyshuttle – System to exchange materials

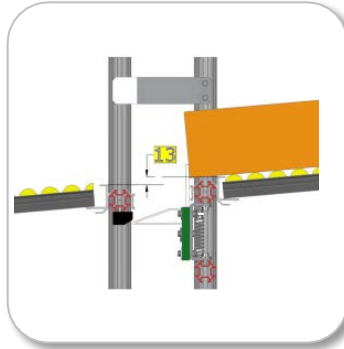
It provides a quick exchange of empty and filled goods by a truck refueling at a fixed magazine, avoiding the manual handling of boxes or containers.



W926 Release unit

When the truck supply is coupled to the fixed magazine, it allows the exchange of containers full / empty.

Package: 1 pcs



W917 Centering brackets

Allow the correct alignment between the carriage of supply and storage disk.

Supplied with screws and nuts for mounting on the EPR1 profile.

Package: 1 pair



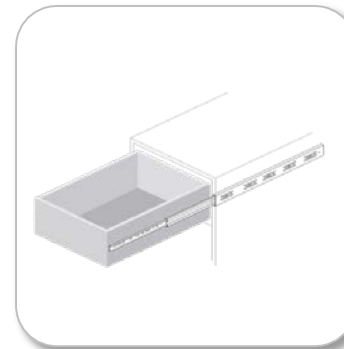
Ball bearing slides

9022 L = 400 mm (Pull out 281 mm, Capability 35 kg)

9023 L = 550 mm (Pull out 415 mm, Capability 35 kg)

9024 L = 700 mm (Pull out 526 mm, Capability 35 kg)

Package: 1 pair



Brackets for ball bearing slides

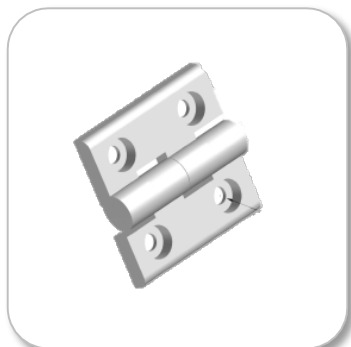
9025 One pair bracket for ball bearing slides 9022

9026 One pair bracket for ball bearing slides 9023

9027 One pair bracket for ball bearing slides 9024

Package: 1 pair





C941 Aluminum hinge

Aluminum hinge 50 x 50 mm, distance of hole 30 mm.
holes Ø 6 mm.

Package: 10 pcs



C316 Handle

Black plastic handle 117 mm hole center.

Package: 1 pcs



W83 Sliding block

Sliding block in POLYDUR to be inserted into tubular profile EPR1, usable, for example, to support balancers.

Package: 1 pcs



C840 Adhesive label holder

Label holder with transparent adhesive 100 x 40 mm.
Consist of a fixed part adhesive and a pivoting in which to place the label. The fixed part adheres to the groove in the profiles of: EKS1, EKS2 and EPR1. The tilting pocket and strong adhesive avoid breakage or detachment due to accidental impacts. Also available in longer lengths.

Package: 50 pcs

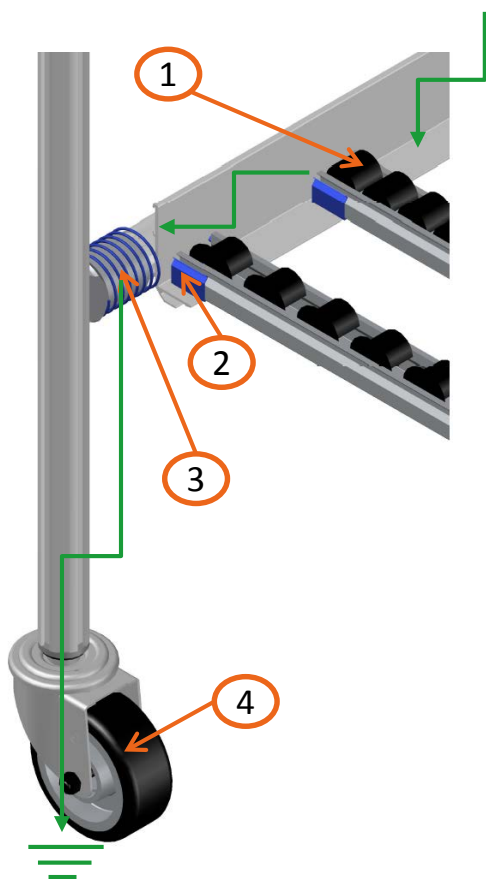




For proper ESD protection it is important that:

- The electric charges are dissipated properly discharged to the ground through materials DISSIPATIVE or CONDUCTIVE.

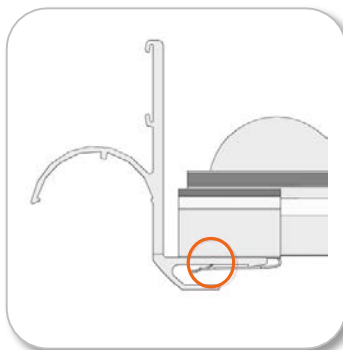
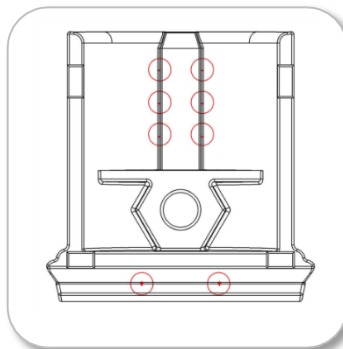
The coupling EKG1 is equipped with a series of micro teeth which, by increasing the anodization (insulating) of the profile EPR1, allow the passage of current from one profile to another, and the consequent possibility of sending it to the ground.



EDC944 Contact spring for roller track profile

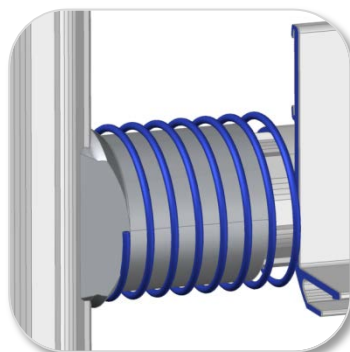
Use this spring to maintain electrical contact between the rollertrack profile and coupling.

Package: 10 pcs



1. Roller tracks ESD (page 12)
2. Steel clip E867 (page 14)
3. Contact spring EDC944
4. Wheel ESD

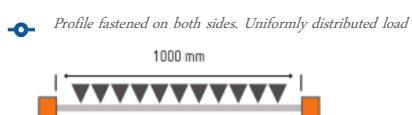
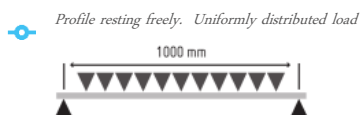
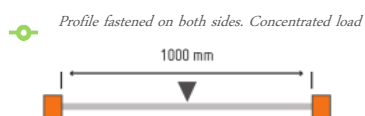
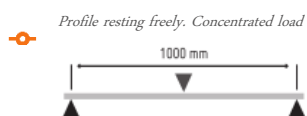
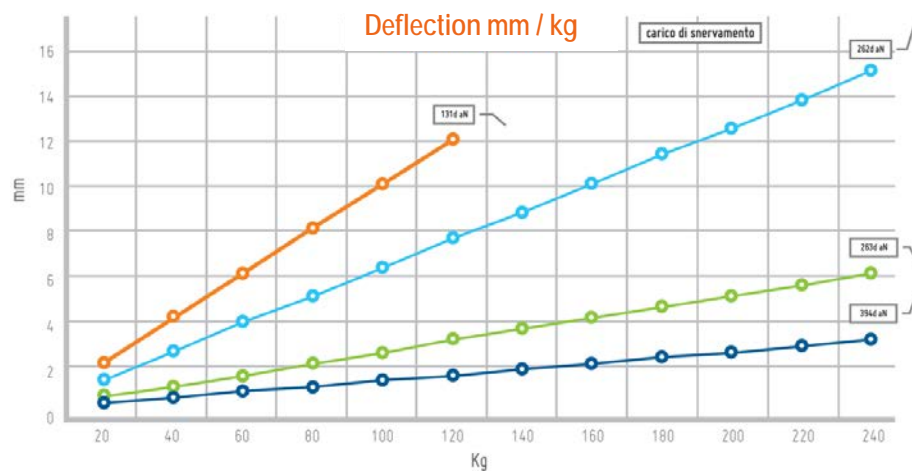
Small teeth in the roller track steel clip E867 affects the anodized surface of the profile EPC818 / EPC820, allowing the passage of static electricity





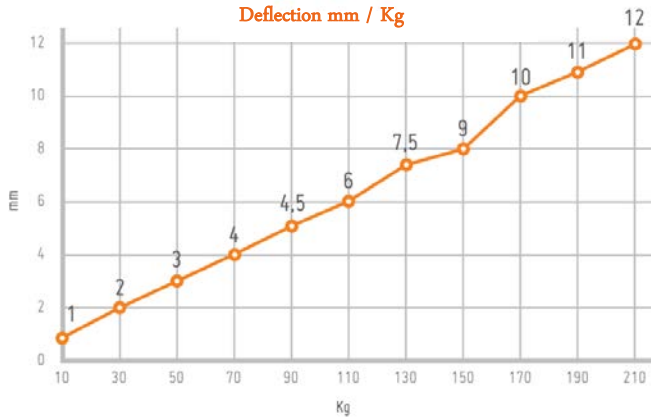
Diameter: 35 mm
Weigh: 2,69 kg/dm³
Area: 3,13 cm³
Moment of inertia (J): 2,85 cm⁴
Resistance module (W): 1,67 cm³

Easysae Aluminum profile EPR1 L=1000mm

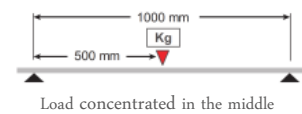
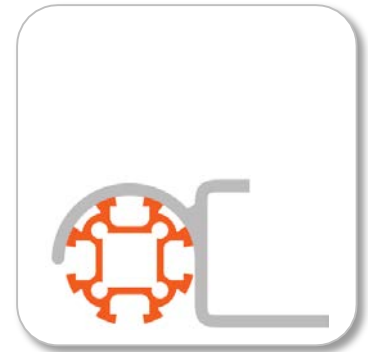


kg	Free-Free	Fixed-Fixed	Free-Fixed	Fixed-Free
20 kg	2,1	0,5	1,3	0,3
40 kg	4,1	1,0	2,6	0,5
60 kg	6,1	1,5	3,9	0,8
80 kg	8,2	2,0	5,1	1,0
100 kg	10,2	2,5	6,4	1,3
120 kg	12,2	3,1	7,7	1,5
140 kg		3,6	8,9	1,8
160 kg		4,1	10,2	2,0
180 kg		4,6	11,5	2,3
200 kg		5,1	12,7	2,5
220 kg		5,6	14	2,8
240 kg		5,1	15,3	3,1

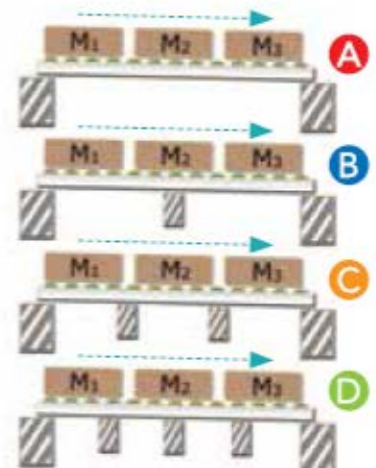
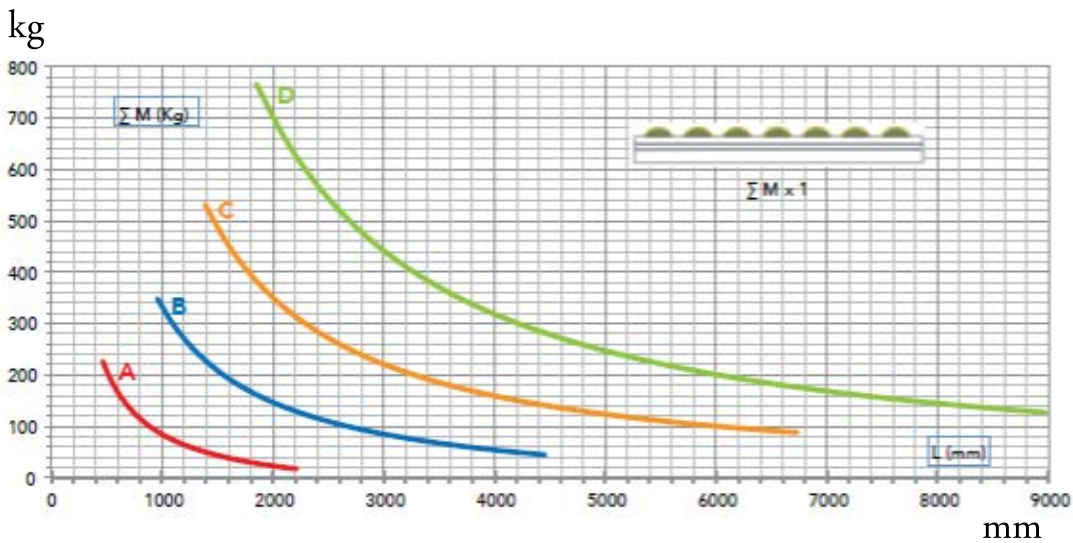
Deflection table of EPR1 assembled together with EKS1 or EKS2



▼ Kg.	Deflection mm
10	1
30	2
50	3
70	4
90	4,5
110	6
130	7,5
150	9
170	10
190	11
210	12

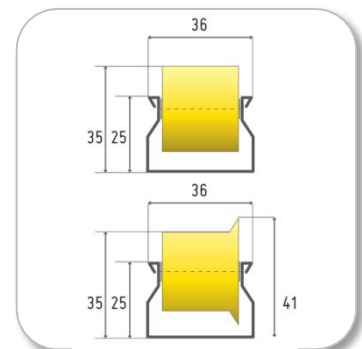


Deflection table Heavy Duty rollertrack C514 & C515



In the calculation, account is taken of a tension not exceeds 30 kg / mm².
 The weights given refer to two bars of rollers, with a uniformly distributed load.
 To increase the load capacity is obviously recommended to add other rollertrack.
 Regardless of the load, each rollertrack can carry up to 40 kg of vertical load.

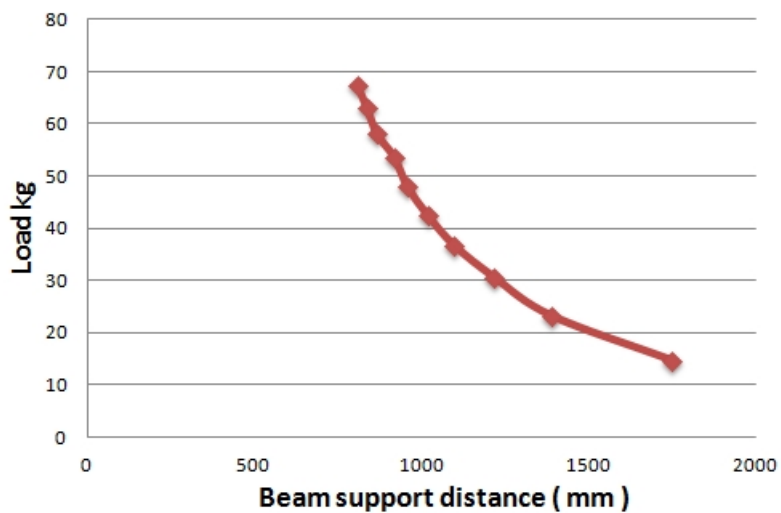
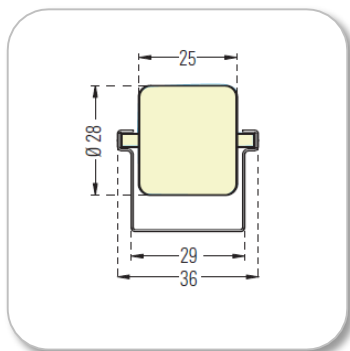
Note! For light load application please contact us for optional roller track choice



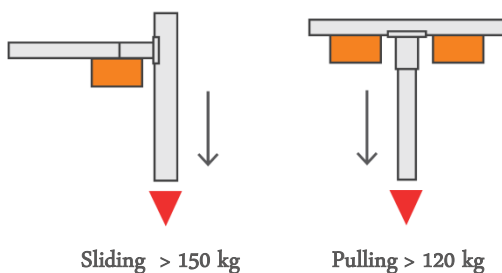
Deflection table Standard rollertrack 3664100

Rollertrack load capability

The load in diagram indicates total load for 2 rollertracks



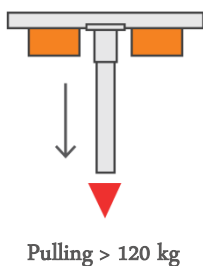
Coupling load Capability item EKG1



Note! Screws should be tightened with torque 9,7 Nm (Same as conventional M6)

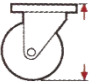
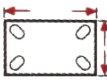
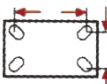
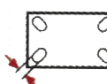
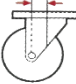
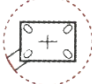



Coupling load Capability item EKG2



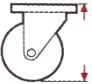
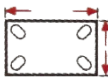
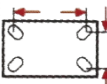
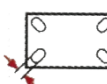
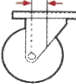
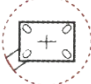

Note! Screws should be tightened with torque 9,7 Nm (Same as conventional M6)

WHEEL SERIES Light 100mm

						
mm	mm	mm	mm	mm	mm	kg
128	100 x 85	80 x 60	9	35	120	150

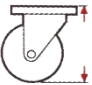
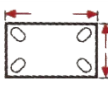
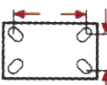
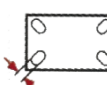
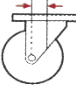
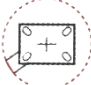



WHEEL SERIES Heavy 100 mm

						
mm	mm	mm	mm	mm	mm	kg
182	100 x 85	80 x 60	9	34	120	220

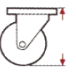
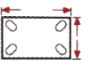
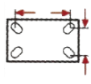
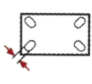
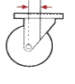
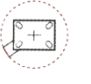




WHEEL SERIES ESD

						
mm	mm	mm	mm	mm	mm	kg
128	100 x 85	80 x 60	9	35	120	80



WHEEL SERIES 300 mm

							
mm	mm	mm	mm	mm	mm	kg	kg
138	100 x 85	80 x 60	9	46	123	700	300



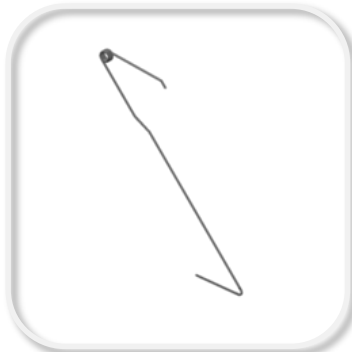
2.1 Tools for assembling



EUT1 Spring for holding joints EKG1 or EKG2

Great tool for holding the coupling while installing tubes.

Package: 2 pcs



W169 Nut holder spring tool

A must have tool for holding nuts ETFX1 or W30 in place.

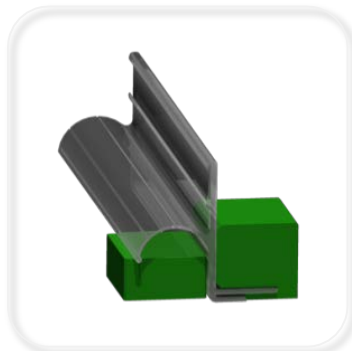
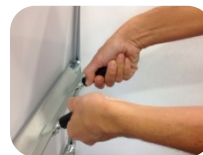
Package: 1 pcs



EUT2 Tool for roller track profile

When installing/removing profiles EPC818 or EPC820 this tool makes the job easier.

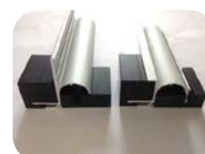
Package: 2 pcs



EUT3 Cutting jig for EPC818 and EPC820

When cutting profiles these nylon blocks are necessary to maintain the right shape of the profile.

Package: 1 pcs







EASYSAE 60mm

With our new strong 60-profile you can fast and easy make stronger designs.

Of course in combination with the 35mm profile!

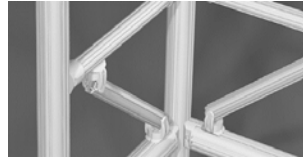
3.1 Components for EASysAE 60 series

EPR4-6 Aluminum profile 60mm L = 6000mm

Aluminum profile 60 mm.

Flexible for use with the 35mm profile EPR1!

Package: 1 pcs



EKG4 Connection kit 90° for 60mm profile

Zinc alloy die-cast coupling halves , sandblasted and galvanized including screw & nut.

Package: 10 pcs



ECP3 End plug for tube EPR4-6

Grey plastic plug for closing the ends of the EPR4-6 tube.

Package: 10 pcs



EKSR4 Kit for mounting feet and wheels for 60mm profile

Used to fit wheels with pin and adjustable feet in the 60 profile.

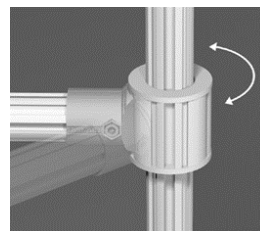
Package: 1 pcs



EKSR3 Hinge kit for 60mm profile

Use this for many applications, such as a swinging arm or a gate.

Package: 1 pcs



3.1 Components for EASYSAE 60 series



EKS6 Stop ring for profile 60

Fits on the outside of the 35 profile, used to hold EKS3 in place.

Package: 1 pcs

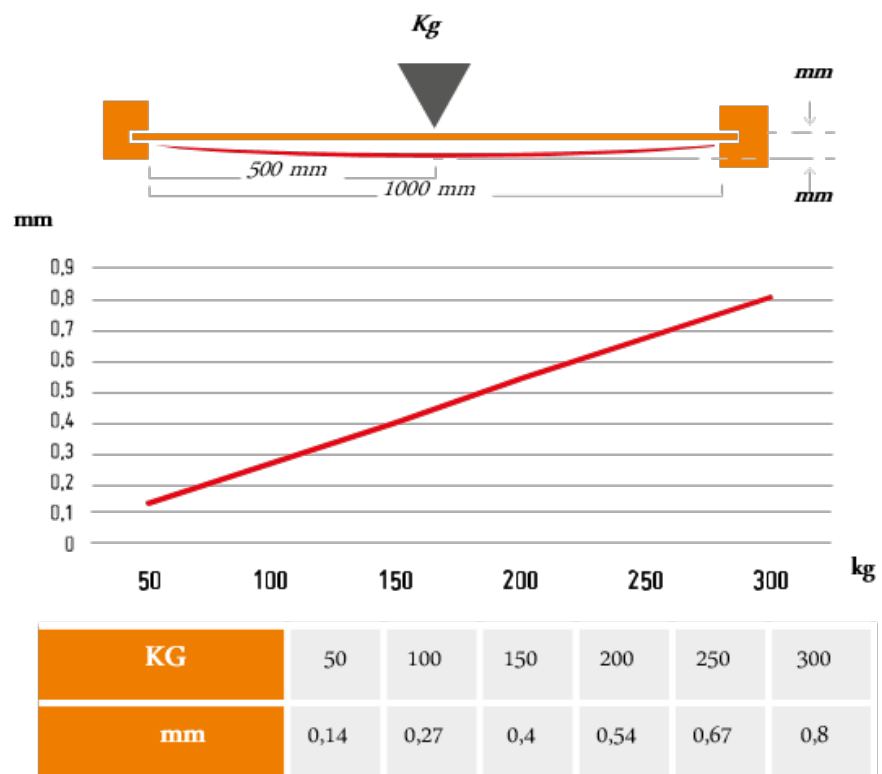


E962 Bushing for sliding bearings

Grey plastic bearing bushing for EASYSAE 60 profile.

Package: 1 pcs

Aluminum profile 60mm EKR4-6 L =1000mm



The new 60 profile guaranties minimal deflection!

4.1 Holder for monitors, keyboards and documents

9003 Monitor holder single

Arm for monitor with bracket 75/100mm

Capability max: 15 kg

Arm length : 250 mm

Rotation: 270°

Tilting Capability : 35°

Package: 1 pcs



9004 Monitor holder double

Arm for monitor with bracket 75/100

Capability max: 10 kg

Arm length : 450 mm

Rotation: 270°

Tilting Capability : 35°

Package: 1 pcs



9005 Monitor holder tripple

Arm for monitor with bracket 75/100

Capability max: 15 kg

Arm length : 505 mm

Rotation: 270°

Tilting Capability : 35°

Package: 1 pcs



9006 Monitor holderErgo

Arm for monitor with bracket 75/100 Can be adjusted in height

Capability max: 8 kg

Arm length : 547 mm

Rotation: 180°

Package: 1 pcs



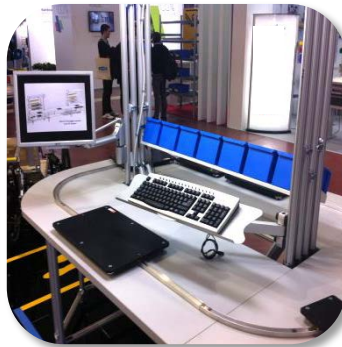
4.1 Holder for monitors, keyboards and documents



9007 Support bracket for monitor arm Ergo

Capability max: 15 kg

Package: 1 pcs



9008 Keyboard and mouse holder

Dimensions: 640 x 172 mm

Capability max: 10 kg

Arm length : 528 mm

Rotation: 270°

Tilting Capability : 45°

Package: 1 pcs



9009 Arm with plastic folder

The arms are made of aluminum, joints in plastic with spring mechanisms. It can hold up to 12 A4 clear view panels.

For fixing column you must use the support 9007.

Folders are not included in the delivery.

Package: 1 pcs



-  9010 Folder blue
-  9011 Folder yellow
-  9012 Folder grey
-  9013 Folder green
-  9014 Folder red
-  9015 Folder black
-  9016 Folder white

For A4 documents

Package: 5 pcs/color

9017 Folder tags

Set of 12 transparent door tags, including printed cards from A to Z.

Dimension: 25 x 20 mm

Package: 1 pcs



W312 3piece folder

Includes 3pcs folders, clear PVC antireflective with reinforced edges with plastic coated steel wire and brackets.

Package: 1 pcs



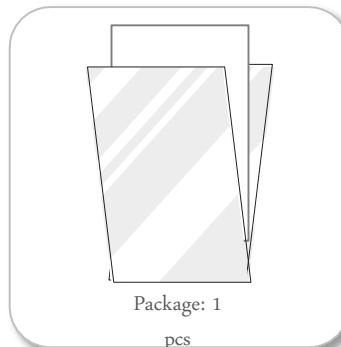
53.0300.2 Folder set 5pcs A4

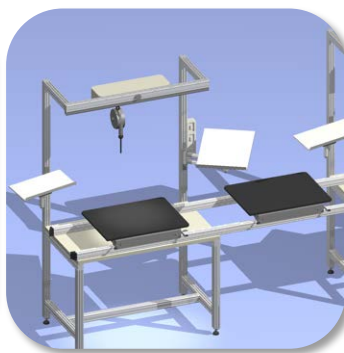
53.0300.12 Folder set 10pcs , A4

53.0300.30 Folder set 5pcs, A5

Metal support with 4 M5 screws or with magnetic support not supplied. The folders can be colored with transparent protective pocket must be ordered separately (code. 26.0035.8 for A4, cod. 26.0035.5 for A5)

Package: 1 pcs





EAC862 Universal work platform

Platform dimension: 500 x 400 mm

Capability max: 20 kg

Arm length: 340 mm

Rotation: 270°

Tilt angle: 18°

Package: 1 pcs



EAC863 Universal work platform

Platform dimension: 500 x 220 mm

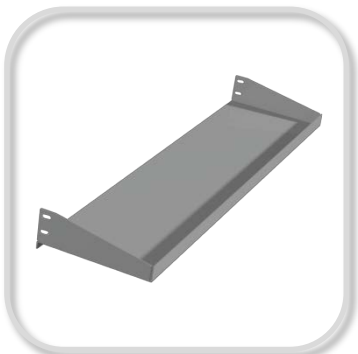
Capability max: 20 kg

Arm length: 340 mm

Rotation: 270°

Tilt angle: 18°

Package: 1 pcs



W123 Shelf 900 x 222 mm

W124 Shelf 1100 x 222 mm

W125 Shelf 1300 x 222 mm

W126 Shelf 1500 x 222 mm

Steel shelf powder coated RAL 7035.

Also available in other dimensions on request.

Package: 1 pcs



9001 Cup/bottle holder

9002 Cup/bottle holder

Package: 1 pcs

9018 LED lamp articulated with magnifying glass - 3 diopters

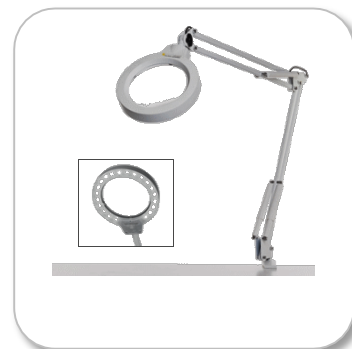
9019 LED lamp articulated with magnifying glass - 5 diopters

Magnifying glass Ø 120 mm, available in 3 diopters (magnification 175%) and 5 diopters (magnification 225%). Supplied with vice.

Equipped with 21 LEDs arranged in a ring, 5000K (850). Lighting power: ca. 1500 lux (distance of 35 cm) / approx. 6000 lx (15 cm).

Consumption: 8W

Package: 1 pcs



9020 LED lamp with a flexible stem with a magnifying glass - 3 diopters

9021 LED lamp with a flexible stem with a magnifying glass - 5 diopters

Magnifying glass Ø 120 mm, available in 3 diopters (magnification 175%) and 5 diopters (magnification 225%). Supplied with bracket with screws.

Equipped with 21 LEDs arranged in a ring, 5000K (850). Lighting power: ca. 1500 lux (distance of 35 cm) / approx. 6000 lx (15 cm).

Consumption: 8W

Package: 1 pcs



Power Strip





W320 Work light single side

Body in self-extinguishing V2 polycarbonate, RAL 7035 gray

2 fluorescent lamps 18W white extra.

Single pole with switch IP55, cable 3x1.5 mm

Package: 1 pcs



W528 Work light double side

Body in self-extinguishing V2 polycarbonate, RAL 7035 gray

2 fluorescent lamps 18W white extra.

Double pole with switch IP55, cable 3x1.5 mm Package: 1 pcs

Double 220V power outlet



W838 LED Work light

Body in self-extinguishing V2 polycarbonate, injection molded, RAL 7035 gray 2895 lm luminous flux unit.

Source: 2 LED modules Linear 12W / 840, color temperature of 4000 K.

Colour rendering Ra> 80. Color tolerance (MacAdam): 3

Single pole with switch IP55, cable 3x1.5 mm double sheath

Package: 1 pcs



W839 Plafoniera a LED con quadro elettrico

Body in self-extinguishing V2 polycarbonate, injection molded, RAL 7035 gray 2895 lm luminous flux unit.

Source: 2 LED modules Linear 12W / 840, color temperature of 4000 K.

Colour rendering Ra> 80. Color tolerance (MacAdam): 3

Single pole with switch IP55, cable 3x1.5 mm double sheath

Double 220V power outlet

Package: 1 pcs

Balancer with inner air tube

C337 Balancer with Capability 0,4-0,8 kg

C338 Balancer with Capability 0,75-1,5 kg

C339 Balancer with Capability 1,2-2,5 kg

Polyurethane tube. Robust design in aluminum.

Capability adjustable. Adjustable stroke limiting device.

Auxiliary safety suspension. Stroke 1350 mm. ¼ air tube.

Tube inner diameter 6 mm. Max. service 8 bar.

Package: 1 pcs



Balancer with double fastening

C364 Balancer with Capability 0,4-1 kg

C365 Balancer with Capability 1-2 kg

C366 Balancer with Capability 2-3 kg

Construction of aluminum alloy. Stainless steel cable.

Capability adjustable. Auxiliary safety suspension.

Adjustable stroke limiting device. Cable guide in anti-friction material. Stroke 1600 mm.

Package: 1 pcs



Balancer

C367 Balancer with Capability 2-4 kg

C368 Balancer with Capability 4-6 kg

C369 Balancer with Capability 6-8 kg

Construction of aluminum alloy. Stainless steel cable.

Capability adjustable. Auxiliary safety suspension.

Adjustable stroke limiting device. Cable guide in anti-friction material. Block fall in case of breakage of the spring. Stroke 2000 mm. Package: 1 pcs





GBD LAGERSYSTEM AB - Grönsta Industriväg 8a - 635 02 Eskilstuna - Sweden
Tel. +46 16 125430 - www.gbd.se - e-mail: gbd@gbd.se

